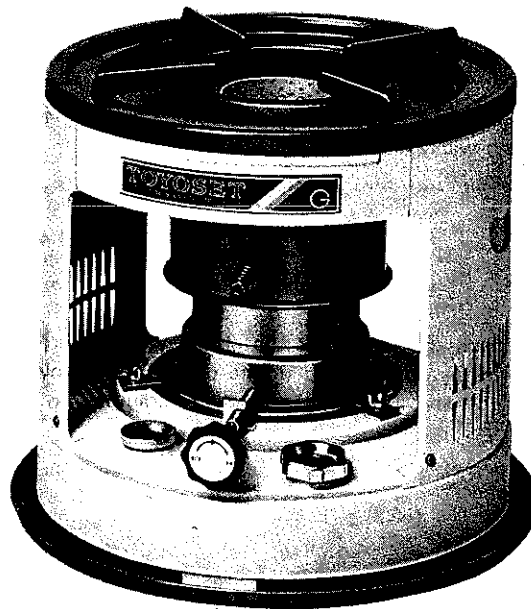


**OPERATING INSTRUCTIONS**  
**KEROSENE COOKING STOVE**  
**MODEL G-1**

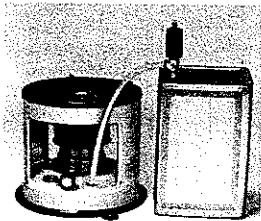


---

**INSPECTION**

- 1) Remove the cooking stove from the carton box, and then remove the protective cardboard.
- 2) Inspect to make sure that none of the screws or bolts have become loose, and that none of the connections have become separated during shipment.
- 3) Turn the knob clockwise to check if the wick moves up and down uniformly and smoothly to a height of 8mm above the wick adjuster.
- 4) Check to make sure that the fuel tank is fixed on the tray.

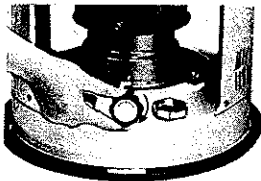
## FUELING



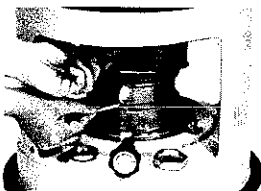
- 1) Remove the fuel filler plug
- 2) Place the funnel in the tank inlet
- 3) After filling the tank, replace the fuel filler plug on the tank inlet, and make sure that it is firmly placed.
- 4) If any fuel is spilled, wipe it dry with a rag.

**CAUTION:** Use KEROSENE only-never use petrol. Petrol is dangerous.  
When water is found at the bottom of the tank clean it out carefully not to cause deficient heating.

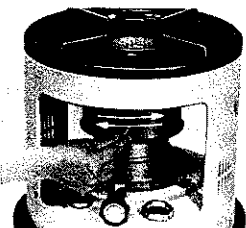
## LIGHTING PROCEDURE



- 1) Turn the knob clockwise as far as possible to raise the wick.



- 2) Raising the prong on the lower part of the chimney, put the match-light to the wick.



- 3) Check to insure that the chimney is properly placed on the burner, and that the wick is not jammed in the chimney by moving the chimney prong lightly to the right and left. If the wick is cramped in the chimney, the stove will smoke.

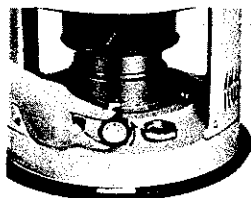
## FLAME ADJUSTMENT



X Wick too high

- 1) In one minute after kindling, blue flame comes up from the top of the chimney.
- 2) If the flame rises high and burns under red flame, turn the knob counter-clockwise and lower the wick to change into blue flame
- 3) Do not use too weak a flame. Even when using very low flame, adjust the flame so that it rises above the top of the chimney. If the flame is too low and only burns inside the chimney, the simmering flame will quickly damage the chimney and will produce an oily smell

## PUTTING OUT

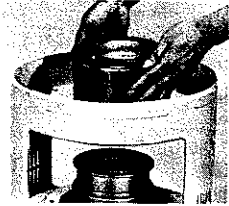


Turn the knob counter-clockwise until it stops. The flame will go out in a short time. After turning off the fire, check to make sure that the flame is completely out.

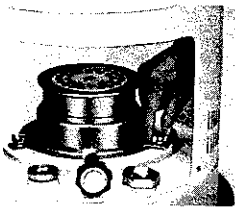
## REPLACING THE WICK



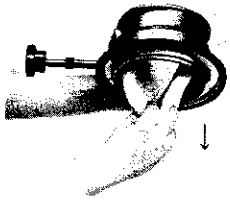
1) Take out the top plate



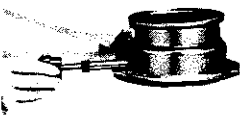
2) Next take off the chimney



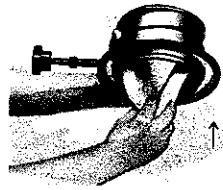
3) Unscrew the three screws on the tank to move the fittings and then take out the wick adjuster by turning it to the right



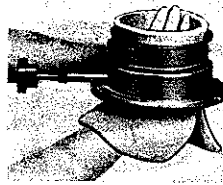
4) Take out the wick from the wick adjuster by folding it.



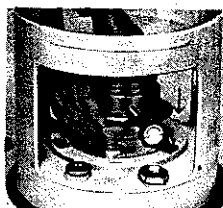
5) Turn the knob clockwise till it stops, where the wick is at its highest position.



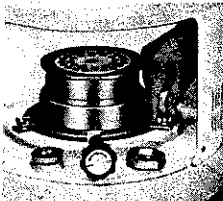
6) Insert the fourfolded wick into the wick adjuster



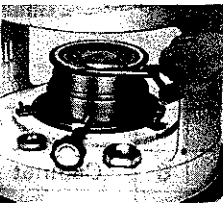
7) Position the wick so that the top comes 8 mm above the wick adjuster and then open the wick over the inner wall of the wick adjuster.



8) Open the lower part of the wick and set the adjuster unit on the tank carefully. Do not allow a loose wick to come out of the tank



9) Set the knob pipe to the supporting metal and fasten the wick adjuster unit tightly with fitting metals where the wick clearance is even all around its circumference. Turn the knob to the right and left to check if the wick moves smoothly.



10) Cut off the rugged edges of the wick and trim them even, using scissors along the surface of the top disc of the adjuster.

## BE SURE TO ALWAYS USE GOOD QUALITY KEROSENE

If old or impure kerosene is used, the stove will not function properly. Poor quality kerosene will cause a large amount of tar to accumulate on the top of the wick, and raising and lowering the wick will not be smooth.

**The Reason:** Poor quality kerosene will cause carbide particles to accumulate even on a clean and well trimmed wick, making it difficult to raise and lower the wick.

## PROPER STORAGE OF KEROSENE

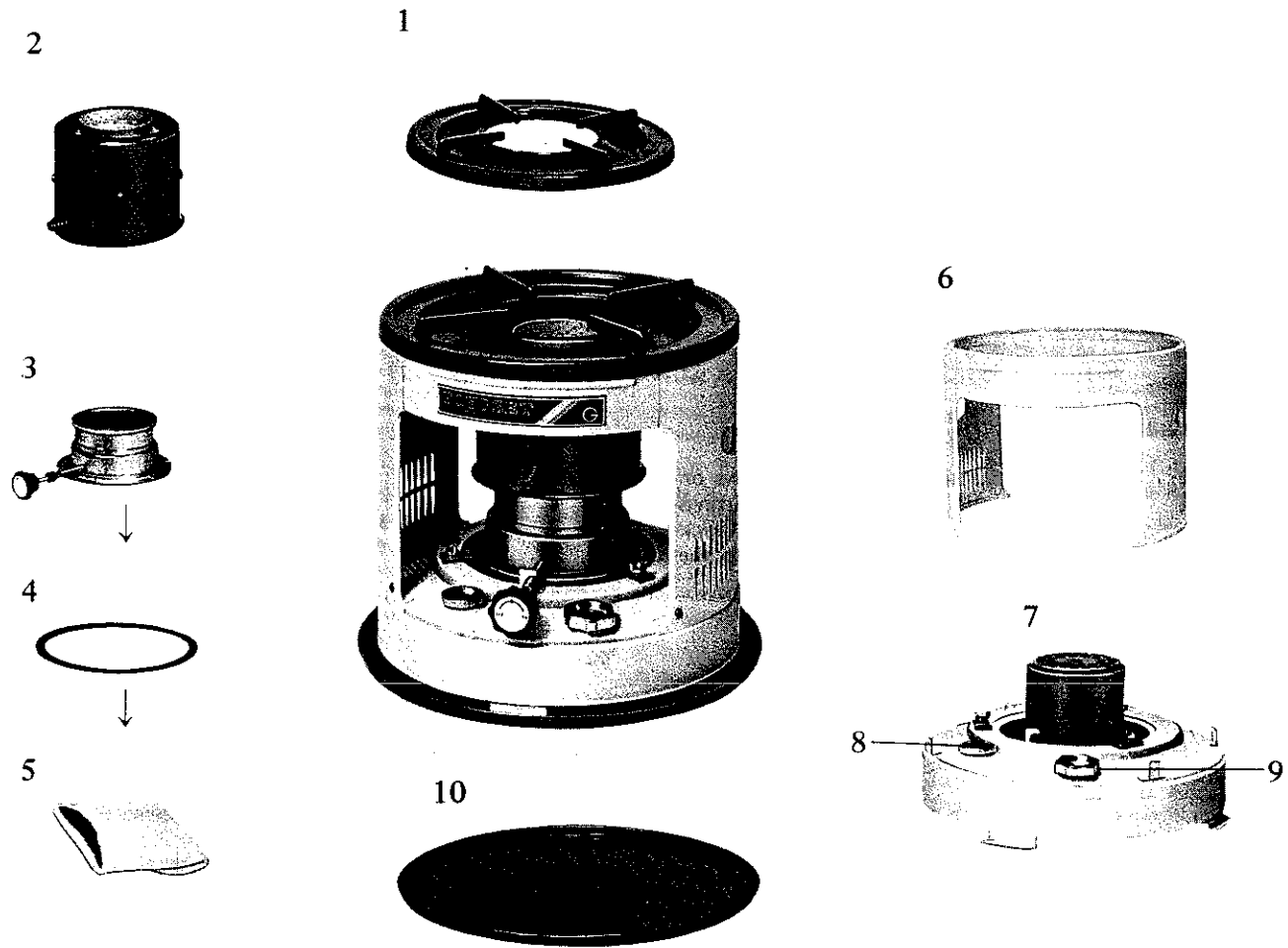
1. If kerosene is stored outdoors in plastic containers during the hot summer season: heat, oxidation and ultra-violet rays will cause the quality to become poor.
2. If kerosene is stored in a sunny location for a long period of time, the quality will become poor.
3. If a small quantity of kerosene is stored in a large container during the summer season, the quality will become poor

## CLEANING THE CHIMNEY

- 1) If the innumerable small holes in the inside of the chimney become plugged because of food boiling over, the flame will not burn properly. Clean the chimney holes by using a brush
- 2) Brush the wick every ten days to remove accumulated cinders  
(Use an old tooth brush or any similar soft brush)

**ALWAYS KEEP IN MIND THAT GOOD QUALITY KEROSENE IS ESSENTIAL FOR GOOD OPERATION OF KEROSENE STOVES.**

## PARTS LIST



1	Top Plate	5	Cotton Wick	9	Fuel Filler Plug
2	Chimney Complete	6	Cabinet	10	Tray
3	Wick adjuster	7	Fuel Tank		
4	Packing	8	Fuel Gauge		

## SPECIFICATION

Dimension	Width	358 mm
	Depth	358 mm
	Height	308 mm
Weight		5.0 kg
Tank Capacity		3.1 ℓ
Heating Power		2,120 Kcal/h
Fuel Consumption		0.24 ℓ/h
Continuous Burning Duration		12.9 h